



TIMEX®

SPORT/OUTDOOR
DEALER CATALOGUE
2013

AUSTRALIA

TIMEX® HEALTH & FITNESS

Performance measurement is the key to managing workouts and realising athletic potential. Whether your customer is a beginner athlete, an experienced road racer, or an elite triathlete, Timex® Health & Fitness products provide a unique range of features to help everyone meet their individual fitness goals. From versatile heart rate monitors to GPS technology with advanced download capabilities, Timex provides easy-to-use solutions at exceptional values.



»»TABLE OF CONTENTS

THE TIMEX HEALTH & FITNESS BRAND.....	02
TIMEX GPS COLLECTIONS.....	04
TIMEX GPS COMPARISON CHART.....	09
TIMEX HEART RATE MONITORS COLLECTIONS.....	10
TIMEX HEART RATE COMPARISON CHART.....	18
THE TIMEX SPORTS BRAND.....	20
TIMEX IRONMAN & SPORTS COLLECTIONS.....	22
TIMEX MARATHON COLLECTIONS.....	24
THE TIMEX EXPEDITION BRAND.....	26
TIMEX EXPEDITION COLLECTIONS.....	28
INDEX.....	36



TIMEX® IRONMAN® RUN TRAINER™ I.O WITH GPS TECHNOLOGY:

Say goodbye to repetitive loops, complicated mapping and over-planning. Enjoy the freedom of running, and let the Run Trainer™ watch do the rest. Get real-time distance, pace, heart rate and more on a large, easy-to-read screen. After the run, review your map and performance with online training software powered by TrainingPeaks™.

**SPEED + DISTANCE WITH FLEX TECH™
DIGITAL 2.4 HEART RATE SENSOR**



T5K575 • \$319



Compatible with the
TIMEX® ANT+™ FOOT POD SENSOR:

See Page 6

FEATURES:

- › Real-time distance, pace, speed and more
- › Quick and reliable signal with SiRFstarIV™ technology
- › 15-Workout memory with dated summary
- › Free access to online training log
- › Desktop device agent allows for easy changes to watch and performance settings
- › 100-Lap chronograph with customisable 3- or 4-line display
- › Hands-free chronograph operation based on distance and time
- › Pace, speed, and distance audible alerts keep your training on-track
- › Hydration and nutrition alerts remind athletes to replenish at regular intervals
- › Five programmable interval timers with optional warm-up and cool down
- › Five customisable alarms with backup
- › Rechargeable Li-Ion battery with 8-hour life in full GPS mode
- › Compatible with ANT+™ sensors for heart rate and foot pod data
- › Watch WR to 50m (GPS and ANT+™ features not available underwater)
- › INDIGLO® night-light with NIGHT-MODE® and Constant-On options

CYCLE TRAINER™ 2.0 BIKE COMPUTER WITH GPS TECHNOLOGY:

The lightweight Cycle Trainer™ 2.0 bike computer adds a dashboard to your handlebars. Five screens of real-time cycling data provided by GPS, the included heart rate sensor, and optional ANT+™ bike and power sensors let you track your performance and finely tune your rides.

FEATURES:

- › Real-time distance, speed, grade and heart rate
- › Quick and reliable signal with SiRFstarIII™ technology
- › Includes Flex Tech™ Digital 2.4 heart rate sensor
- › 20-Workout memory with dated summary
- › Free access to online training log
- › Desktop device agent allows for easy changes to watch and performance settings
- › Five customisable screens
- › Barometric altimeter and temperature sensor on-board
- › Hands-free operation based on distance and time
- › Includes two quick-release dual-position bike mounts
- › Rechargeable Li-Ion battery with 18-hour life in full GPS mode
- › Compatible with ANT+™ sensors for speed, cadence and power data
- › INDIGLO® night-light with selectable duration and Constant-On option



T5K615 • \$319



Includes the Timex Flex Tech™ Digital 2.4 Heart Rate Sensor with adjustable strap and user-replaceable battery

TIMEX ANT+™ FOOT POD:

Compatible with Timex® IRONMAN® GPS watches for indoor training and for use in challenging outdoor environments

FEATURES:

- › Wirelessly transmits real-time pace, distance, and running cadence data with ANT+™ technology
- › Attaches to laces with snap-on clip
- › Slips into recess under insole (for applicable shoes)
- › Auto-on/off with owner-replaceable battery
- › Compatible with Timex IRONMAN® Run Trainer™ 2.0 and Run Trainer™ 1.0 GPS watches, and IRONMAN® Global Trainer™ Bodylink® system



T5K573 • \$99



Compatible with the BIKE SPEED + CADENCE + DISTANCE SENSOR:



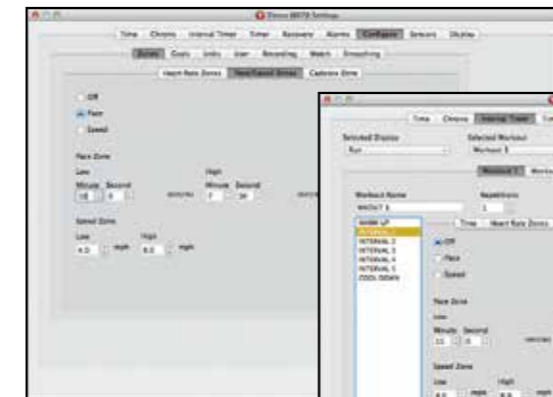
T5K445 • \$69



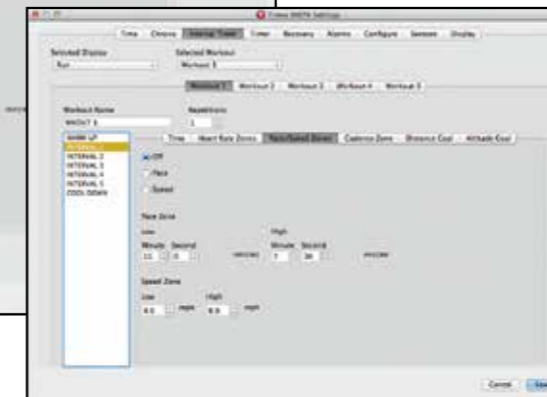
COMPUTER SOFTWARE

Beyond offering outstanding value from its GPS products, Timex® provides free training software for its Cycle Trainer™ 2.0 bike computer and Timex® IRONMAN® Run Trainer™ watches.

DESKTOP DEVICE AGENT SOFTWARE



Run Trainer™ Pace Zone



Run Trainer™ Interval Timer Settings

Quickly and easily customise and update the Cycle Trainer™ and Run Trainer™ GPS products with our Device Agent software.

Downloadable at: www.TimexIronman.com/DeviceAgent, this desktop application works on Windows® and Mac® operating systems and provides access to all the settings through a convenient series of tabs and pull-down menus. Simply point, type and click, and your GPS products are ready to display the data you need to make the most out of your training.

ONLINE TRAINING LOG SOFTWARE



In addition to desktop customisation, the Device Agent provides direct access to the free Timex online training log powered by **TRAININGPEAKS™**.



TrainingPeaks is leading-edge fitness and nutrition software used by top professionals and everyday athletes who are serious about results. When a Timex device is paired with TrainingPeaks, athletes get everything they need to track, analyse and plan their training:

- Fitness trends shown over time on the TrainingPeaks dashboard
- Free mobile access to TrainingPeaks calendar on your Smartphone
- Graphs for each workout with peak pace, speed, heart rate, cadence or power
- Option to upgrade to TrainingPeaks Premium for elevation correction and data editing

Users of the Timex free site enjoy these exclusive benefits:

- A set of training plans from Timex, and access to the TrainingPeaks store to browse thousands of triathlon, running and cycling plans
- Daily emails with any planned workouts
- Charts to view data by laps and splits, and time in zones
- Ability to analyze and save segments like a particular climb or interval training
- Scientific statistics like Normalised Graded Pace and aerobic decoupling
- Routes that can be created and saved from Timex GPS files



		T5K615	T5K575
			
Features		Cycle Trainer™ 2.0	IRONMAN® Run Trainer™ 1.0
GPS AND ADVANCED TECHNOLOGY	ANT+™ Sensor Compatibility	HRM, Bike Cadence and Speed, Power	HRM, Foot Pod
	Pace Display		•
	Speed Display	•	•
	Zone Alerts	Audible, Visual	Audible, Visual
	Performance Pacer (Tracks On-Time Goals)	•	
	Navigation (Waypoint and Route Recording, Track Back, Compass)	•	
	Altitude	Barometric & GPS	GPS
	Customizable and Downloadable from Computer	•	•
CHRONOGRAPH	Hands-Free Operation	Auto-Split, Stop, Resume	Auto-Split, Stop, Resume
	Lap and Split Timing	•	•
	Hydration and Nutrition Alerts		•
	Calories Burned	•	•
MEMORY	Workouts Logged (# Laps / Workout)	20 (1000 Laps Total)	15 (100)
	Time in Zone	•	•
	Calories Burned	•	•
INTERVAL/ COUNTDOWN TIMERS	# Interval Timer Workouts (Segments per Workout)		5 (5)
	Interval Duration		Time
	Countdown Timer with Stop/Repeat Options		•
ALARMS	Customizable Alarms		5 with Backup
DEVICE	Workout Display	4 Pages / 2 to 6 Data Points each	4 Pages / 3 or 4 Data Points each
	Battery Life (in Full GPS Mode)	18 Hours	8 Hours
	Standby Battery Life (Full Charge)	1 Year (Powered Down)	12 Weeks
	Water Resistance Rating*	Splash-Resistant	50m
	INDIGLO® night-light	plus Night-Mode® feature and Constant-On	plus Night-Mode® feature and Constant-On

*GPS and ANT+™ Features Not Available with Watch Underwater

»»TIMEX® HEART RATE MONITORS

IRONMAN® TARGET TRAINER DIGITAL HEART RATE MONITORS

Take your training further with this complete system. This advanced digital heart rate monitor with interval training capability functions just like a personal coach on your wrist.

WATCH FEATURES:

- › Flex-Tech™ digital sensor eliminates heart rate monitor cross-talk and electronic interference
- › 3-Workout chronograph memory - 200-lap total with average heart rate per lap
- › Two interval timers — each segment with its own target zone and label
- › Target Time Pacer gives visual and audible feedback when laps are logged based on user settings. Pace and time difference from lap target time displayed
- › Hydration and nutrition alerts remind athletes to replenish at regular intervals
- › Target heart rate alert with time-in-zone data
- › BPM or %-of-Max heart rate display
- › Recovery heart rate timer
- › Average/peak heart rate, and calories burned workout data
- › Countdown timer, and three customisable alarms with backup
- › Watch WR to 100m (heart rate feature not available underwater)
- › INDIGLO® night-light with NIGHT-MODE® option



T5K545 • \$189



T5K546 • \$189



TapScreen™ Technology logs lap/split times with one firm tap on the watch face.

TIMEX® IRONMAN® ROAD TRAINER™ DIGITAL HEART RATE MONITORS:

An essential training companion that makes a bold statement, the TIMEX® IRONMAN® Road Trainer™ digital heart rate monitor series offers performance and comfort in a next-generation style. This innovative tool is designed for both fitness enthusiasts and weekend warriors to help them meet their exercise goals.

FULL-SIZE



T5K211 • \$169



T5K212 • \$169



MID-SIZE



T5K213 • \$169



T5K214 • \$169



WATCH FEATURES:

- › Flex-Tech™ digital sensor eliminates heart rate monitor cross-talk and electronic interference
- › 50-Lap chronograph memory with average heart rate per lap
- › Interval timer - each segment with its own target zone
- › Target heart rate alert with time-in-zone data
- › BPM or %-of-Max heart rate display
- › Recovery heart rate timer
- › Average/peak heart rate, and calories burned workout data
- › Countdown timer, and two daily alarms with backup
- › Watch WR to 100m (heart rate feature not available underwater)
- › INDIGLO® night-light with NIGHT-MODE® feature

»»TIMEX® HEART RATE MONITORS

TIMEX® IRONMAN® ROAD TRAINER™ DIGITAL HEART RATE MONITORS:

An essential training companion that makes a bold statement, the TIMEX® IRONMAN® Road Trainer™ digital heart rate monitor series offers performance and comfort in a next-generation style. This innovative tool is designed for both fitness enthusiasts and weekend warriors to help them meet their exercise goals.

FULL-SIZE



NEW

T5K719 • \$169



NEW

T5K720 • \$169



MID-SIZE



NEW

T5K723 • \$169



NEW

T5K722 • \$169



WATCH FEATURES:

- › Flex-Tech™ digital sensor eliminates heart rate monitor cross-talk and electronic interference
- › 50-Lap chronograph memory with average heart rate per lap
- › Interval timer - each segment with its own target zone
- › Target heart rate alert with time-in-zone data
- › BPM or %-of-Max heart rate display
- › Recovery heart rate timer
- › Average/peak heart rate, and calories burned workout data
- › Countdown timer, and two daily alarms with backup
- › Watch WR to 100m (heart rate feature not available underwater)
- › INDIGLO® night-light with NIGHT-MODE® feature

ZONE TRAINER™ DIGITAL HEART RATE MONITORS:

Take your training further with the Timex® Zone Trainer™ digital heart rate monitor. The “in-zone” graphic display and memory chronograph meet the needs of enthusiasts who pursue their goals in the gym or outside.

MID-SIZE

WATCH FEATURES:

- › Flex-Tech™ digital sensor eliminates heart rate monitor cross-talk and electronic interference
- › 27-Lap chronograph memory with average heart rate per lap
- › Target heart rate alert with time-in-zone data
- › BPM or %-of-Max heart rate display with in-zone graphic indicator
- › Recovery heart rate timer
- › Average/peak heart rate, and calories burned workout data
- › Countdown timer, and daily alarm with backup
- › Watch WR to 30m (heart rate feature not available underwater)
- › INDIGLO® night-light with NIGHT-MODE® feature



T5K627 • \$149



T5K628 • \$149



»»TIMEX® HEART RATE MONITORS

TIMEX® HEART RATE MONITORS:

Improve your health, track your intensity and help meet your weight loss goals by being “in the know” with a Timex HRM. The Timex® Personal Trainer™ and Easy Trainer™ heart rate monitors deliver essential fitness management data in simple-to-operate watches.

EASY TRAINER™ HEART RATE MONITORS:

WATCH FEATURES:

- › Flex-Tech™ analog sensor works with most heart rate-enabled gym and fitness equipment
- › Automatic elapsed timing
- › Average/peak heart rate workout data
- › Time of day with month/date display
- › Watch WR to 30m (heart rate feature not available underwater)
- › INDIGLO® night-light



T5G941 • \$99



PERSONAL TRAINER™ HEART RATE MONITORS:

WATCH FEATURES:

- › Flex-Tech™ analog sensor works with most heart rate-enabled gym and fitness equipment
- › Automatic elapsed timing
- › Target heart rate alert with time-in-zone data
- › BPM or %-of-Max heart rate display
- › Recovery heart rate timer
- › Average/peak heart rate, and calories burned workout data
- › Time of day with month/day/date display
- › Watch WR to 30m (heart rate feature not available underwater)
- › INDIGLO® night-light



T5G971 • \$119



T5K541 • \$119



RACE TRAINER HEART RATE MONITOR:

WATCH FEATURES:

- › Flex-Tech™ analog sensor works with most heart rate-enabled gym and fitness equipment
- › Automatic elapsed timing
- › Target heart rate alert with time-in-zone data
- › BPM or %-of-Max heart rate display
- › Recovery heart rate timer
- › Average/peak heart rate, and calories burned workout data
- › Time of day with month/day/date display
- › Watch WR to 30m (heart rate feature not available underwater)
- › INDIGLO® night-light



T5K568 • \$249



T5K570 • \$249



HEALTH TRACKER™ WATCH:

Start towards a healthier you today. Take the guesswork out of diet and exercise. Create custom fitness and diet goals and track your progress to stay motivated.

FEATURES:

- › Automatically records distance, steps and calories burned all day
- › Diet diary to input units or calories consumed
- › Activity tracker with 7-day memory
- › Customisable goals
- › Workout mode will display elapsed time, distance and exercise pace intensity in real time (slow/med/fast)
- › 24-hour countdown timer with stop and repeat
- › Three daily, weekday, weekend or weekly alarms with 5-minute backup
- › One-time easy setup
- › 2 time zone settings
- › Water resistance to 50m
- › INDIGLO® night-light with NIGHT-MODE® feature



T5K486 • \$99



HEALTH TOUCH™ CONTACT HEART RATE MONITORS:

Accurate heart rate measurement without a chest strap.

HEART RATE FEATURES:

- › No chest strap required, simply place a finger on the bezel ring to see your heart rate
- › Heart rate displayed in BPM and %-of-max formats
- › Target zone with alert
- › Track calories burned

WATCH FEATURES:

- › Stopwatch
- › Countdown timer
- › Daily alarm
- › Second time zone
- › Water resistance to 50m (heart rate feature not available underwater)
- › INDIGLO® night-light



T5K470 • \$119



Health Touch™ & Health Touch™ Plus Interactive Packaging



Simply touch the ring to see your heart rate.



	Features	IRONMAN® Target Trainer	IRONMAN® Road Trainer™
HEART RATE / ADVANCED FEATURES	Heart Rate Sensor/Strap	Digital	Digital
	Heart Rate Format	BPM or %-of-Max	BPM or %-of-Max
	Target Zone Alert	•	•
	Customizable Target Zones	5	1
	Target Zones Based on Max Heart Rate	5	5
	Recovery Heart Rate Timer	Auto & Manual	Auto & Manual
	Gym Equipment Compatible		
CHRONO & MEMORY	Saved Workouts (Laps/Workout)	3 (200 Laps Total)	1 (50)
	Workout Display	Lap/Split	Lap/Split
	Workout Heart Rate (Average and Peak)	•	•
	Average Heart Rate Each Lap	•	•
	Workout Time in Target Heart Rate Zone	•	•
	Calories Burned	•	•
INTERVAL / COUNTDOWN TIMERS	# Interval Timer Workouts (Segments per Workout)	2 (8)	1 (2)
	Countdown Timer with Stop/Repeat Options	•	•
ALARMS	Customizable Alarms	3 with backup	1 with backup
WATCH	Battery Life (Full/Midsize)	1.5 Years	3 Years / 3 Years
	Water Resistance Rating*	100m	100m
	INDIGLO® night-light	plus Night-Mode® feature	plus Night-Mode® feature

	Zone Trainer™	Personal Trainer™	Easy Trainer™
	Digital	Analog	Analog
	BPM or %-of-Max	BPM or %-of-Max	BPM
	•	•	
	1	1	
	5		
	Auto & Manual	Manual	
		Analog Only	Analog Only
	1 (27)	1	1
	Lap or Split	Elapsed Time (peek)	Elapsed Time (peek)
	•	•	•
	•		
	•	•	
	•	•	
	•		
	1 with backup		
	3.5 Years / 2 Years	2 Years	2 Years
	30m	30m	30m
	plus Night-Mode® feature	•	•

* Heart Rate Features Not Available with Watch Underwater

» TIMEX® SPORTS

TIMEX® IRONMAN® timepieces are designed to bring state-of-the-art technology and cutting edge design to every level of activity. Our products aim to meet the comfort, style, durability and accuracy demands of world-class athletes... but you don't have to be an Ironman competitor to appreciate the advantage.



IRONMAN® SLEEK™ 250-LAP:

WATCH FEATURES:

- › TapScreen™ Technology logs laps with a firm tap. Tap force can be adjusted, enabled or disabled as needed
- › Five workouts with 250-lap memory Chronograph with lap/split data and audible alerts for hydration and nutrition needs
- › Target Time Pacer provides audible and visual pace feedback when laps are logged
- › Two customizable interval timers with 8 labeled intervals and repetition settings
- › Easy access to chronograph and interval workout log by date with locking capability
- › Three daily, weekday, weekend or weekly alarms with 5-minute backup
- › Two time zone settings for travel or daylight saving time
- › Water resistance to 100m
- › INDIGLO® night-light with NIGHT-MODE® feature

FULL-SIZE



T5K588 • \$169



T5K589 • \$169



MID-SIZE



T5K590 • \$169



T5K591 • \$169



T5K592 • \$169



IRONMAN® SLEEK™ 50-LAP:

WATCH FEATURES:

- › Chronograph training log stores workouts by date
- › 50-lap memory with 100-hour chronograph with lap/split data display
- › Two 24-hour interval timers with stop and repeat
- › Three daily, weekday, weekend or weekly alarms with 5-minute backup
- › Two time zone settings for travel or daylight saving time
- › Comfortable resin strap
- › Water resistance to 100m
- › INDIGLO® night-light with NIGHT-MODE® feature

FULL-SIZE



T5K512 • \$129



T5K335 • \$129



MID-SIZE



T5K701 • \$129



T5K702 • \$129



T5K703 • \$129



T5K656 • \$129



T5K655 • \$129



T5K654 • \$129



IRONMAN® CORE 50-LAP: FULL-SIZE

WATCH FEATURES:

- › Chronograph training log stores workouts by date
- › 50-lap memory with 100-hour chronograph with lap/split data in large fonts for easy readability
- › Two 24-hour interval timers with stop and repeat
- › Three daily, weekday, weekend or weekly alarms with 5-minute backup
- › Two time zone settings for travel or daylight saving time
- › Comfortable resin strap
- › Water resistance to 100m
- › INDIGLO® night-light with NIGHT-MODE® feature



T5K689 • \$129



T5K690 • \$129



T5K495 • \$129



T5K496 • \$129



IRONMAN® 30-LAP:

WATCH FEATURES:

- › 30-lap memory recall with 100-hour chronograph with lap/split data
- › 24-hour countdown timer with stop and repeat
- › 15 preset occasions to set reminders
- › Three daily, weekday, weekend or weekly alarms with 5-minute backup
- › Three time zone settings for travel and daylight saving time
- › Fast Wrap® Velcro® strap (T5K693, T5H421) or resin strap (all other styles)
- › Water resistance to 100m
- › INDIGLO® night-light with NIGHT-MODE® feature

FULL-SIZE



T5K692 • \$119



T5E901 • \$119



MID-SIZE



T5K515 • \$119



T5E961 • \$119



IRONMAN® 10-LAP

WATCH FEATURES:

- › 10-lap memory recall with 100-hour chronograph with lap/split data
- › 24-hour countdown timer with stop and repeat
- › One daily, weekday, weekend or weekly alarm with 5-minute backup
- › Two time zone settings for travel and daylight saving time
- › Comfortable resin strap
- › Water resistance to 100m
- › INDIGLO® night-light with NIGHT-MODE® feature

FULL-SIZE



T5K607 • \$99



T5K608 • \$99



T5K609 • \$99



MID-SIZE



T5K523 • \$99



marathon.: DIGITAL MENS

WATCH FEATURES:

- › 24-hour stopwatch
- › Resin strap
- › INDIGLO® night-light
- › One daily alarm
- › Water resistance to 50m



T5K643 • \$79



T5K644 • \$79



T5K516 • \$89



T5K423 • \$89



marathon.: STOPWATCH

WATCH FEATURES:

- › 24-hour stopwatch
- › Resin strap
- › INDIGLO® night-light
- › One daily alarm
- › Water resistance to 50m



T5K518 • \$79



T5K364 • \$79



T5K519 • \$79



T5K362 • \$79



T5K363 • \$79



T5K645 • \$79



marathon.: JELLY

WATCH FEATURES:

- › Easy to read dial
- › Resin strap
- › Luminous hands
- › Water resistance to 50m



T5K365 • \$79



T5K367 • \$79



T5K504 • \$79



T5K502 • \$79



T5K503 • \$79



T5K579 • \$79



T5K425 • \$79



T5K427 • \$79



1440 SPORTS DIGITAL:

WATCH FEATURES:

- › 24hr Chronograph
- › 24hr Countdown Timer
- › Daily Alarm
- › 2 Timezones
- › INDIGLO® night-light
- › Water resistance to 50m



T5K237 • \$89



T5G881 • \$79



TIMEX® EXPEDITION®

We feel most alive when we're furthest from life's routine. The air seems fresher when we ski unmarked slopes, define our own trail, or escape to our secluded fishing spot. Creating a relationship with nature nourishes like no technology can. Timex® Expedition® watches reflect the secluded terrain that inspires adventure, and are built to endure the depths and elements you subject yourself to.



FIELD CHRONOGRAPH: FULL-SIZE

WATCH FEATURES:

- › Chronograph measures minutes, seconds, 1/20th second
- › Easy to set date feature
- › Stainless steel bracelet (T49939) or genuine leather strap (T49905)
- › Water resistance to 100m
- › INDIGLO® night-light with NIGHT-MODE® feature



T49905 • \$199



NEW

T49939 • \$249



TRAIL SERIES:

WATCH FEATURES:

- › Shock-resistant to I.S.O. standards
- › QUICK-DATE® feature
- › Stainless steel case
- › Water resistant leather (T49261) or mixed fabric/leather strap (T49271)
- › Water resistance to 100m
- › INDIGLO® night-light



T49261 • \$149



T49271 • \$149



RUGGED CORE ANALOGUE:

WATCH FEATURES:

- › QUICK-DATE® feature
- › Toray Ultrasuede® strap of 100% recycled polyester (T49937)
- › Genuine leather (T49879), nylon (T49880) or resin strap (T49878)
- › Water resistance to 100m (T49937)
- › Water resistance to 50m (T49878, T49880)
- › INDIGLO® night-light



NEW

T49937 • \$139



T49879 • \$129



T49878 • \$129



T49880 • \$129



ALUMINUM TRAIL: FULL-SIZE:

WATCH FEATURES:

- › QUICK-DATE® feature
- › Aluminum top ring on resin case
- › Nylon strap
- › Water resistance to 50m
- › INDIGLO® night-light



NEW

T49932 • \$129



NEW

T49933 • \$129



T49874 • \$139



T49875 • \$139



T49877 • \$139



RUGGED FIELD: FULL-SIZE

WATCH FEATURES:

- › QUICK-DATE® feature
- › Stainless steel bracelet (T49924, T49925), genuine leather (T49926, T49927, T49908, T49909, T46681), nylon (T49884, T49885, T49886) or resin strap (T49882)
- › Water resistance to 100M (T46681)
- › Water resistance to 50m (all other styles shown)
- › INDIGLO® night-light



T49909 • \$119



RUGGED CORE ANALOG:

WATCH FEATURES:

- › QUICK-DATE® feature
- › Nylon (T49863) or resin strap (T49831)
- › Water resistance to 50m
- › INDIGLO® night-light



T49831 • \$119



T49863 • \$99



TRAIL SERIES CORE ANALOGUE:

WATCH FEATURES:

- › QUICK-DATE® feature
- › Nylon (T49689, T49692)
- › Water resistance to 100m
- › INDIGLO® night-light
- › Tough Canvas Strap
- › Luminescent Hands



T49692 • \$99



T49689 • \$99



Think outside the circle™. Timex Expedition is shaking up the altimeter watch category with the WS4. It's unique, widescreen dashboard displays relevant outdoor information at a glance. The intuitive user interface allows consumers to quickly begin using the Altimeter, Barometer, Compass and Thermometer; and quickly start exploring new terrain. Timex worked with a new technology partner on the WS4 to provide highly accurate sensors, ensuring reliability. Plus, the dynamic styling and exciting colour options make a bold statement on the wrist.



- ›› ALTIMETER, BAROMETER, THERMOMETER AND COMPASS
- ›› ACTIVITY REVIEW MODE
- ›› GRAPH DISPLAYS PROGRESS AND TRENDS
- ›› ON SCREEN PROMPTS FOR EASY SETTING AND CALIBRATION
- ›› USER REPLACEABLE BATTERY
- ›› 50 METRE WATER RESISTANT
- ›› **INDIGLO®** night-light

T49664 • \$299.00



SHOCK DIGITAL:

WATCH FEATURES:

- › Shock-resistant to I.S.O. standards
- › 100-hour chronograph with lap and split times
- › 24-hour countdown timer with stop and repeat
- › Three daily, weekday or weekend alarms with 5-minute backup
- › Two time zone settings
- › Water resistance to 100m
- › INDIGLO® night-light with NIGHT-MODE® feature



T49896 • \$139



T49897 • \$139



WIDE SCREEN:

WATCH FEATURES:

- › 100-hour chronograph with lap and split times
- › 24-hour countdown timer with stop and repeat
- › Three daily, weekday or weekend alarms with 5-minute backup
- › Two time zone settings
- › Water resistance to 50m
- › INDIGLO® night-light with NIGHT-MODE® feature



T49900 • \$129



T49903 • \$129



TRAIL MATE™:

WATCH FEATURES:

- › Accelerometer technology calculates distance, pace, speed and calories burned
- › Store and review 10 activity sessions
- › 24-hour chronograph with lap and split times
- › 24-hour countdown timer with stop and repeat
- › Three daily, weekday, weekend or weekly alarms
- › Two time zone settings
- › Resin (T49845) or nylon strap (T49846)
- › Water resistance to 100m
- › INDIGLO® night-light



T49845 • \$129



T49846 • \$129



NOTES:

CUSTOMER SERVICE & WARRANTY INFORMATION

Designa Accessories has its own in-house Customer Service Centre to help you & your customers with any and all enquiries regarding the servicing and repair of all Designa Accessories products. Our service centre is manned by professional service consultants in conjunction with our team of qualified watch makers and technicians.

Call the Service Centre directly on:
1800-800-030

3 Year Limited Warranty

This warranty is void if the watch is opened by anyone other than the Designa Accessories Customer Service Centre.

3 Years – On movement from the date of purchase (does not include the crown)

2 Years – On battery from the date of purchase. As part of any battery replacement.

1 Year – On bands/straps. Due to irregularities in wear and tear of each individual's watch, the plating (finishing) of the watch is only guaranteed to sustain standard (factory tested) wear and tear. The lens is not covered under this warranty.

Under the Australian Consumer Law, we advise our goods come with guarantees that cannot be excluded under the Australian

Consumer Law. You are entitled to a replacement or refund for a major failure and for compensation for any other reasonably foreseeable loss or damage. You are also entitled to have the goods repaired or replaced if the goods fail to be of acceptable quality and the failure does not amount to a major failure (the "Mandatory Provision").

ALL WARRANTY CLAIMS MUST BE ACCOMPANIED BY A PROOF OF PURCHASE RECEIPT* CLEARLY DISPLAYING THE ORIGINAL PURCHASE DATE OF THE WATCH

Please Note: Designa Accessories reserves the right to repair or replace any warranty watch with an equivalent style.

Repairs Procedure:

Please help us to ensure that your customer's watch is repaired or serviced in the most efficient manner by noting the following:

1. When returning a watch to us for repair, please ensure that it is accompanied by the following information:
 - a. Store name, address and reference no.
 - b. Store phone number and contact name
 - c. Warranty slip & proof of purchase
 - d. A short explanation as to the suspected or known problem
 - e. Return address during business hours

For security and tracking purposes, please ensure that the watch is returned via registered post or courier to: Designa Accessories, PO Box 2576, Taren Point NSW 2229 N.B. It is unnecessary to return product in original packaging. It is preferable to simply return the product wrapped in a suitable protective material (i.e.. bubble-wrap).

2. When a watch is received at Designa Accessories, it is registered by store name and docket number.

- a. It is then passed to one of our qualified watchmakers for inspection.
- b. If the watch is covered under warranty (as per accompanying warranty slip & proof of purchase) the watch will be repaired at no cost.
- c. If the watch is out of warranty, we will provide you with a quotation and await your advice as to whether or not the customer would like us to proceed with the repair.
- d. Once completed, the repair is then dispatched via courier.

INDEX

CODE	PG	CODE	PG	CODE	PG	CODE	PG	CODE	PG
T49261	30	T49905	30	T5K364	26	T5K523	25	T5K628	13
T49271	30	T49909	32	T5K365	27	T5K541	14	T5K643	26
T49664	33	T49932	30	T5K367	27	T5K545	10	T5K644	26
T49689	32	T49933	30	T5K423	26	T5K546	10	T5K645	26
T49692	32	T49937	31	T5K425	27	T5K568	15	T5K654	23
T49831	32	T49939	30	T5K427	27	T5K570	15	T5K655	23
T49845	34	T5E901	24	T5K445	6	T5K573	6	T5K656	23
T49846	34	T5E961	24	T5K470	17	T5K575	5	T5K689	24
T49863	32	T5G881	27	T5K486	16	T5K579	27	T5K690	24
T49874	31	T5G941	14	T5K495	24	T5K588	22	T5K692	24
T49875	31	T5G971	14	T5K496	24	T5K589	22	T5K701	23
T49877	31	T5K211	11	T5K502	27	T5K590	22	T5K702	23
T49878	31	T5K212	11	T5K503	27	T5K591	22	T5K703	23
T49879	31	T5K213	11	T5K504	27	T5K592	22	T5K719	12
T49880	31	T5K214	11	T5K512	23	T5K607	25	T5K720	12
T49896	34	T5K237	27	T5K515	24	T5K608	25	T5K722	12
T49897	34	T5K335	23	T5K516	26	T5K609	25	T5K723	12
T49900	34	T5K362	26	T5K518	26	T5K615	6		
T49903	34	T5K363	26	T5K519	26	T5K627	13		